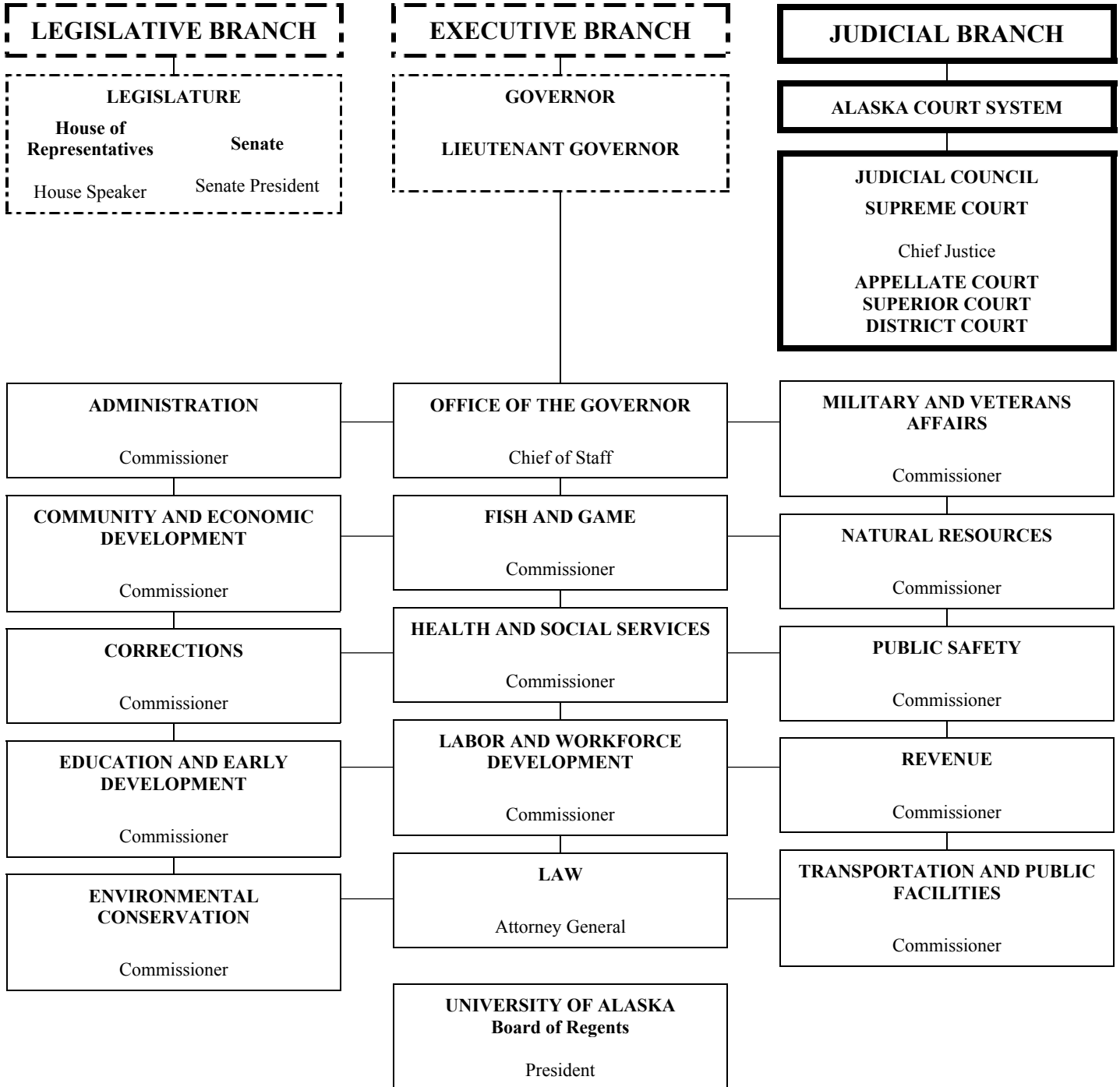


# STATE OF ALASKA ORGANIZATION CHART



- Elected by popular vote (includes Lieutenant Governor, elected on same ticket as Governor).
- ===== Justices and Judges of the Courts nominated by Judicial Council, selected by Governor and thereafter subject to voter approval.
- Department heads appointed by Governor and confirmed by the Legislature.